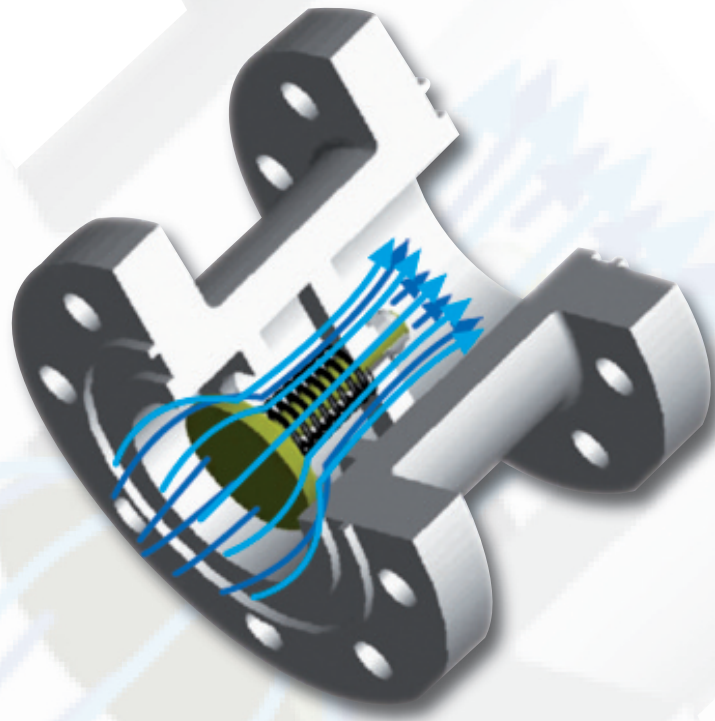
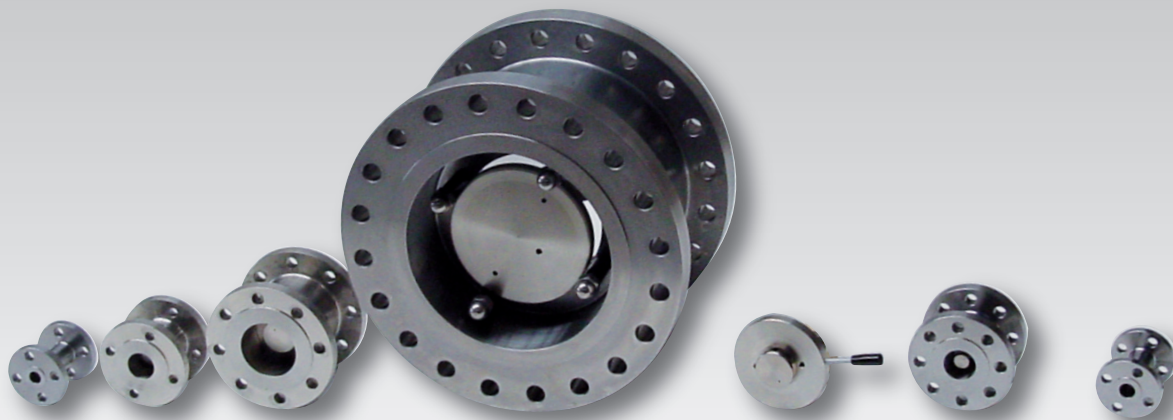




Excess Flow Valves

**Valves...
for special requirements**

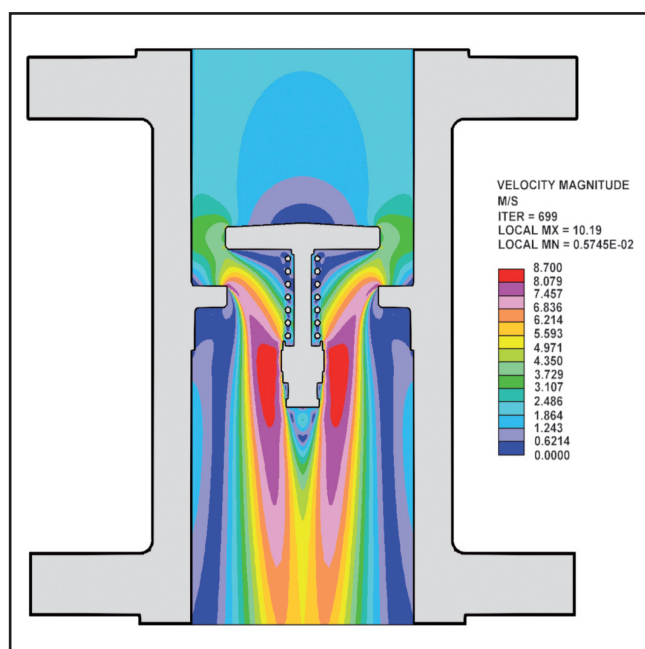




Excess Flow Valves are used to shut off the flow of fluid from the source in case of breakage of components downstream of the valve, or to prevent dangerous overflows given by wrong operations.

Each single valve is designed according to the specific fluid and to the requested maximum flow rate.

The valve closes when the flow of fluid generates enough pressure to overcome the tension of the spring.



The valve remains closed until upstream and downstream pressure is equalized, i.e. until system has been fixed.

Excess Flow Valves allow flow of fluid in both directions but closure in one way only.

Sizes: from 1/4" to 16"

**Ratings: from ASME 150#
to ASME 2500#**

Connections: flanges/screwed/specials

**Materials: Carbon Steel
Stainless Steel
Nickel Alloys
Titanium/Specials**



NICOLINI CLAUDIO S.r.l.

Please do not hesitate to contact us

20090 Trezzano sul Naviglio (Milano) Italy - Via C. Treves, 68

Phone +39.02.48.400.722 - Fax +39.02.48.400.726

www.nicolinivalves.it - email: info@nicolinivalves.it