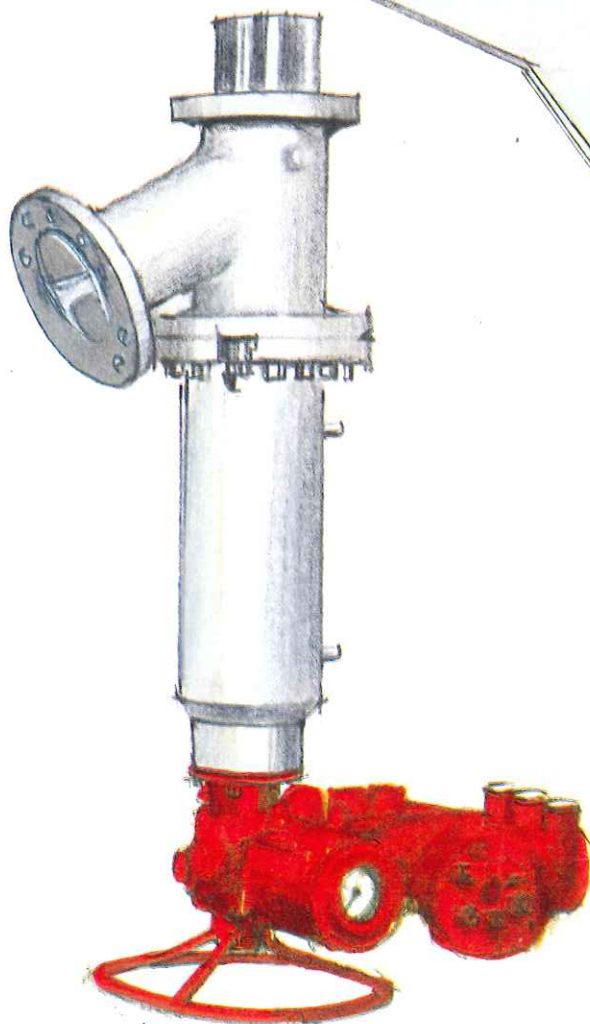
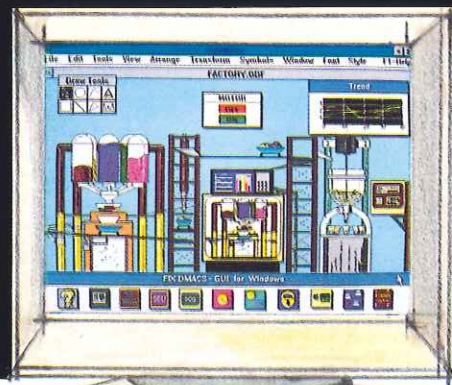
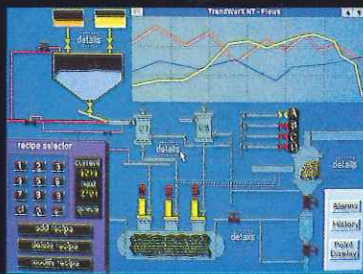
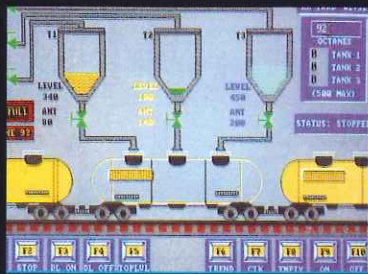


Valves... for special requirements

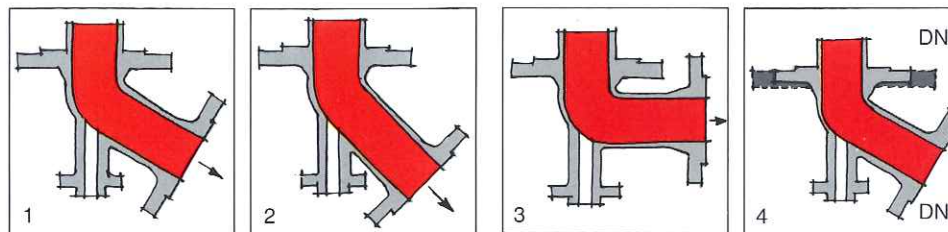


Tank Bottom Valves

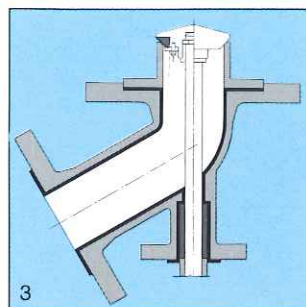
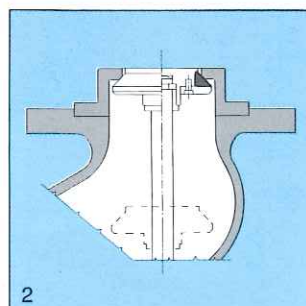
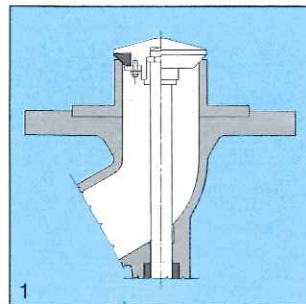


Tank Bottom Valves

DISCHARGE ANGLE:
 1 60° (standard)
 2 45°
 3 90°



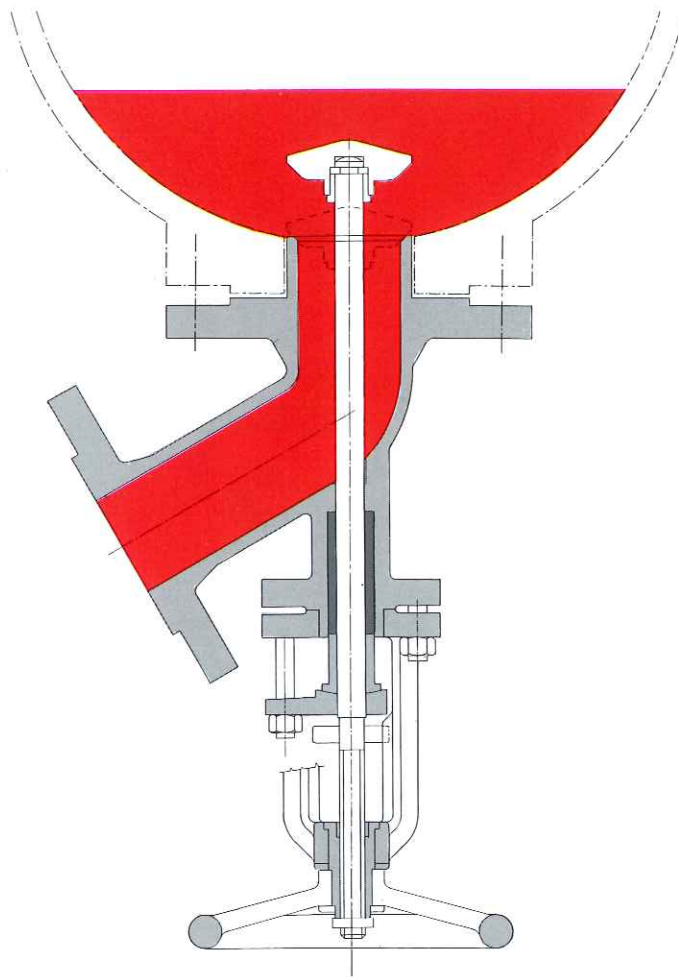
4 NOMINAL DIAMETER
 $DN1 \geq DN2$



1 OUTWARD MOVING DISC TYPE
 metal or soft seal with exchangeable seat.

2 INWARD MOVING DISC TYPE
 metal or soft seal with exchangeable seat.

3 LINED VALVE
 with PTFE, rubber or glass.

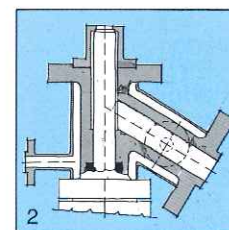
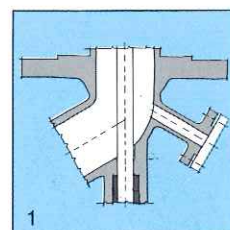


DISC TYPE

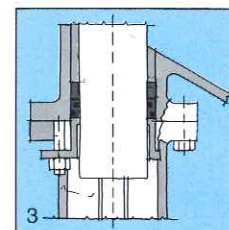
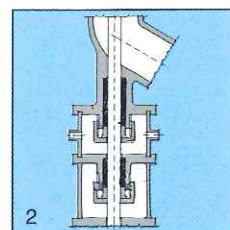
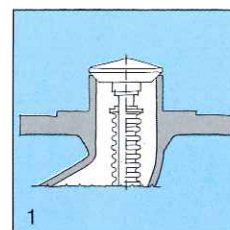
This tank bottom valve presents very good characteristics of drainage, reduced overall dimensions, tightness and unexpensive price. The outward moving disc type - i.e. moving into the vessel - is the most used valve for its flow discharge design and its crust-breaking use, while in presence of agitators near the tank bottom walls the inward moving disc type is preferred. Disc bottom valves can be supplied with soft seals, removable seats, bellows, flushing connections, linings, sensing elements... with the advantage of using small actuators due to the short on-off strokes of the disc. Seats are sized according to customer requirements to fit the nozzle wall.

PISTON TYPE

Piston bottom valves offer the best discharge characteristics: full bore flow, no dead-space, easily mirror-polish surfaces. For this reason these valves are strongly recommended with abrasive and high viscosity fluids, and when the self-cleaning action of the piston is needed. High temperature and pressure require metal seal, while soft seated valve allows crust-breaking use. In case of pad nozzle larger than piston size the valve is supplied with special adapters that avoid dead-space.

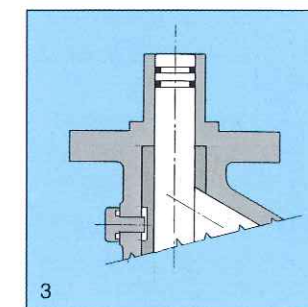
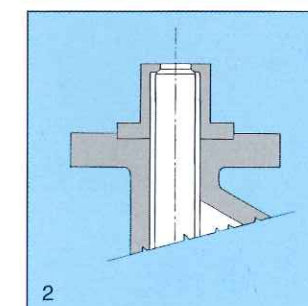
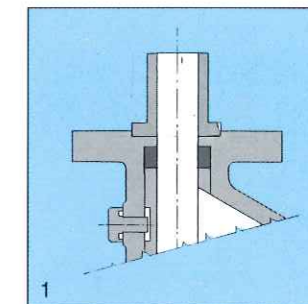
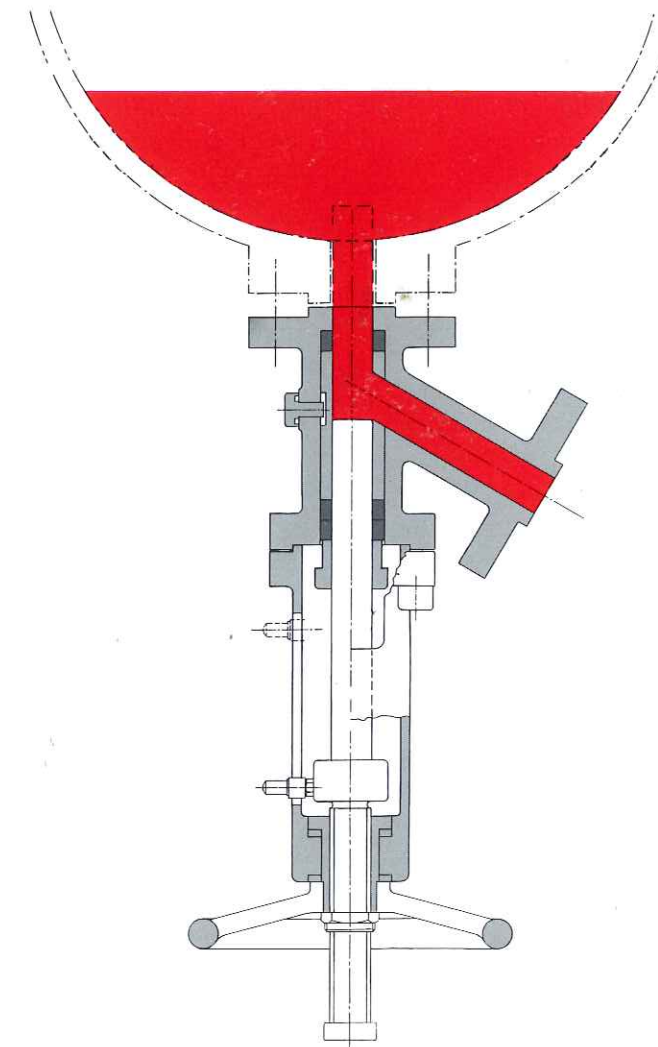
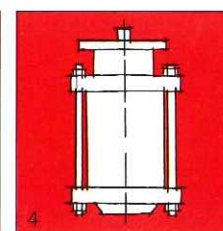
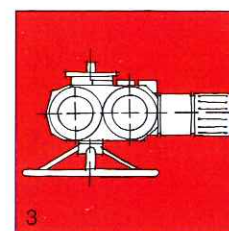
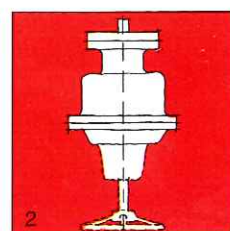
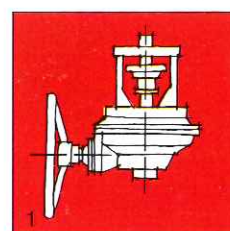


1 Valve with flushing connections.
2 Valve with heating jacket.



1 Bellows seal only for disc type valve.
2 Double independent stuffing box with washing connections.
3 Packing with sealing rings.

ACTUATORS
 1 Handwheel with gear reducer
 2 Pneumatic
 3 Electrical
 4 Hydraulic



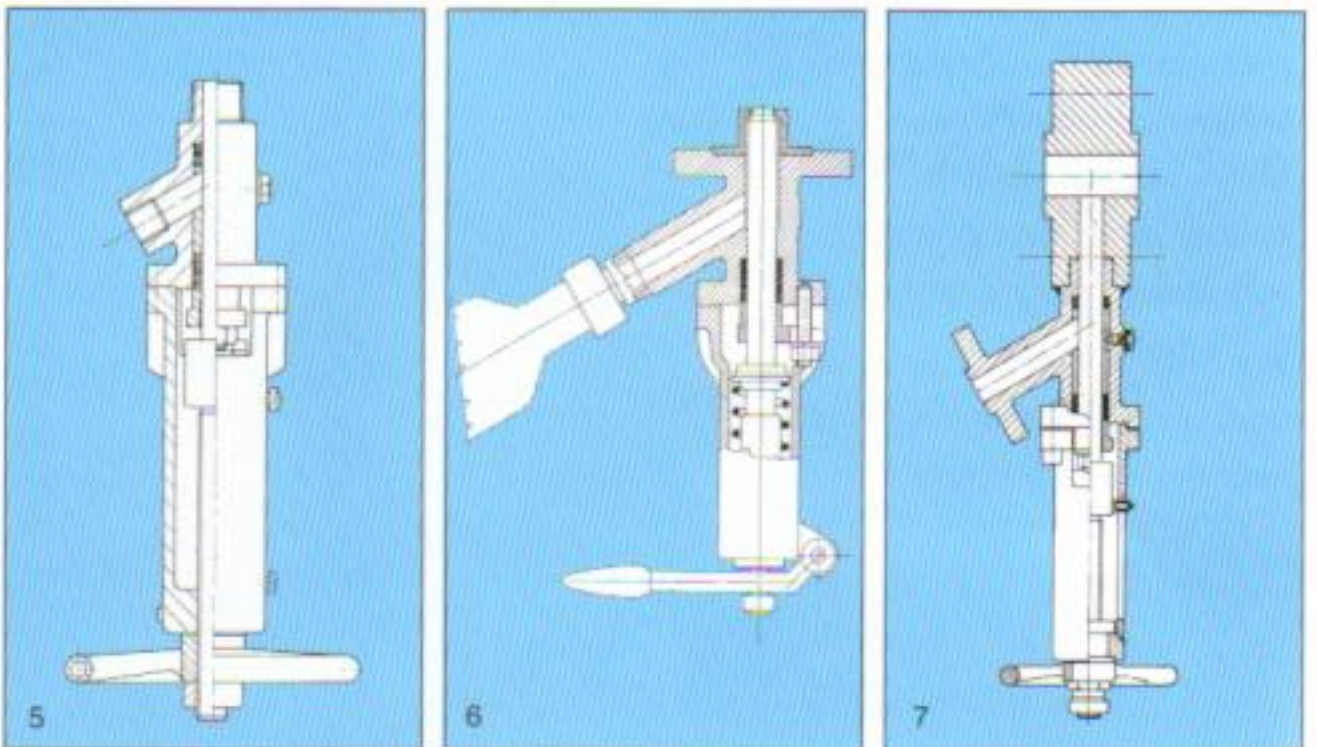
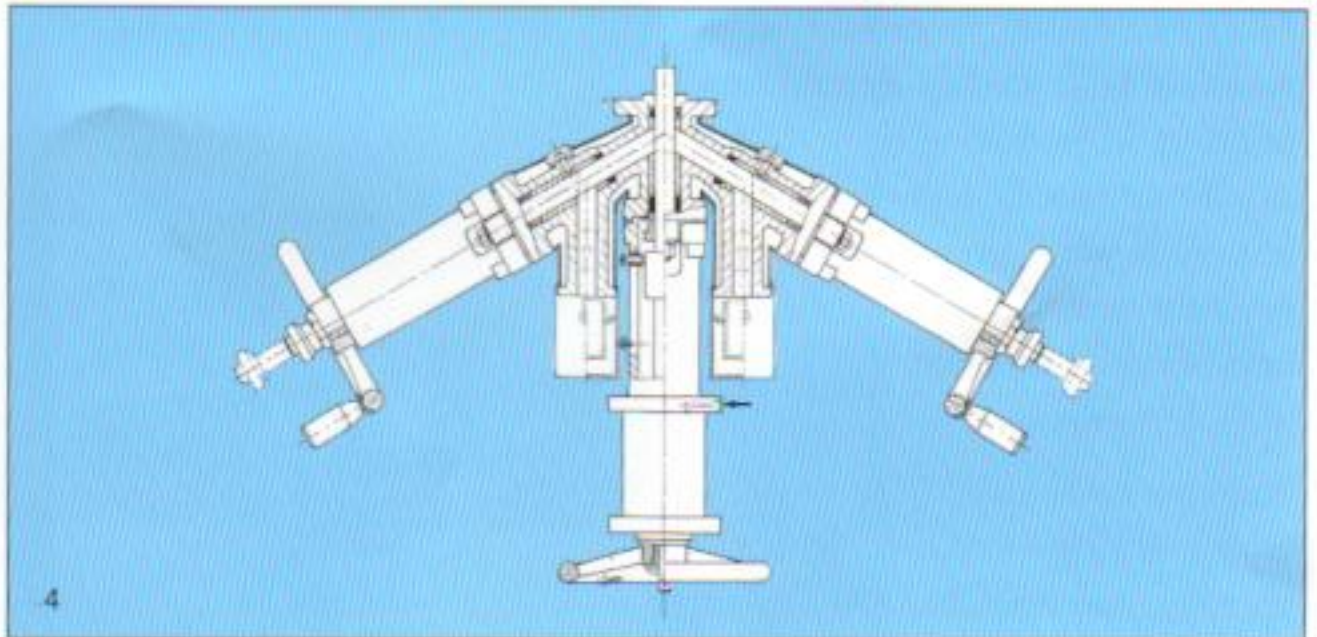
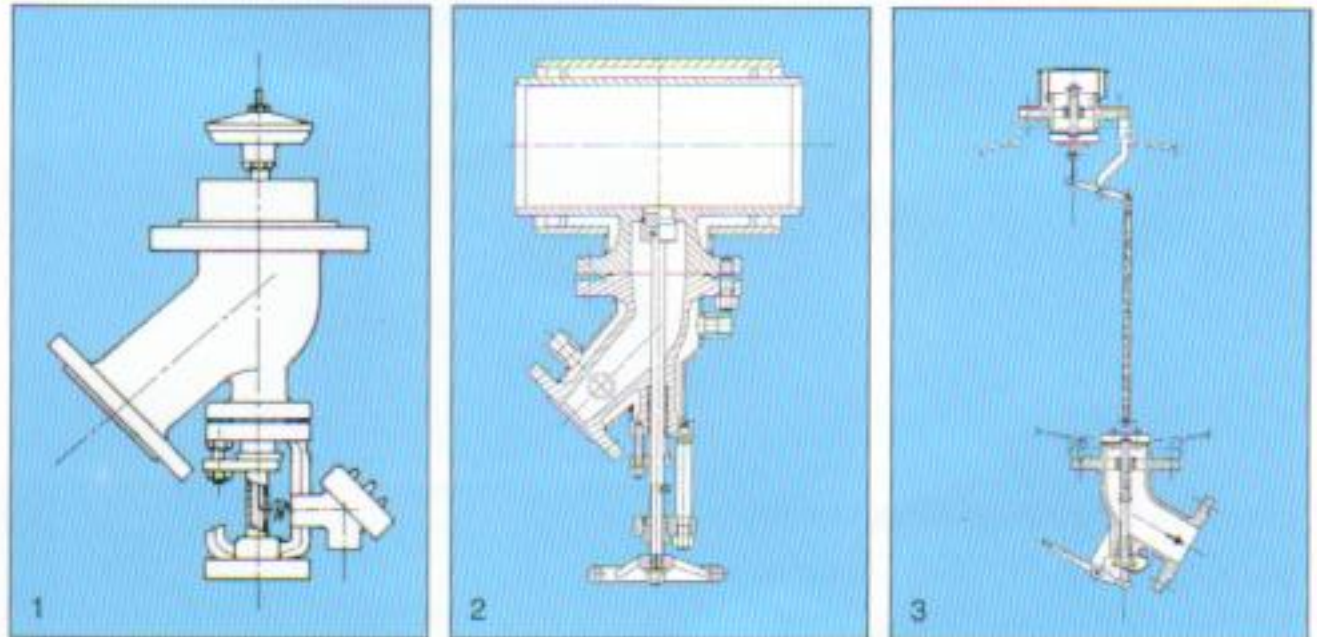
1 REMOVABLE ADAPTER
 fills the void between the piston and the nozzle wall.

2 METAL SEAL
 with exchangeable seat to allow high temperature and pressure.

3 SOFT SEAL ON THE PISTON
 excellent with polymers and with fluids containing solids.

SAMPLING VALVES AND OTHER APPLICATIONS

Our technical department has reached great experience and skill in projecting and developing new valves for specific needs of various industries and engineering groups. Some of these special valves, in particular our SAMPLING and MULTIVALVES, are now considered standards: here follows just a few examples.



1 Disc type valve with temperature sensor recommended for chemical process.

2 Disc type valve with pipe section full jacketed.

3 Disc type valve connected to vacuum safety valve used in railway tankers.

4 Full jacketed multipiston valve with sampling probes.

5 Sampling valve Basic type.

6 Sampling valve with spring return. Safety lever.

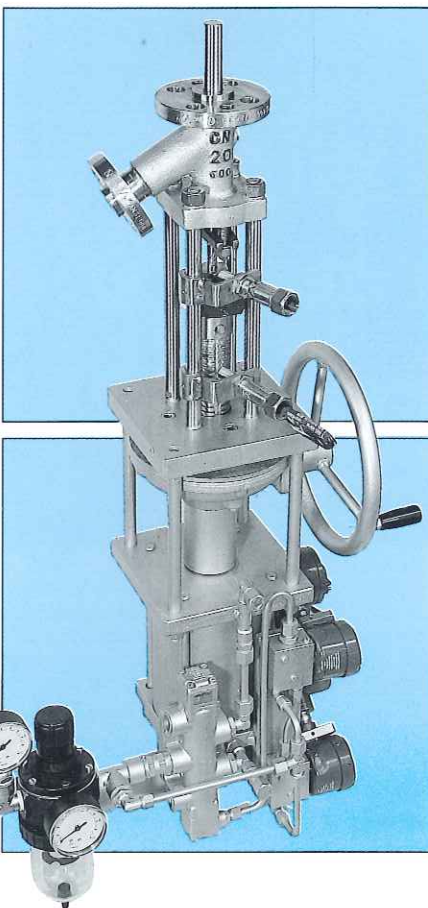
7 Sampling valve with drip ring.

From the beginning of its activity our Company, Nicolini Claudio Srl, has been producing TANK BOTTOM VALVES, improving its technical skills, curing details, and in doing so, acquiring a significant specific knowledge that has made our Company one of the most qualified and appreciated European manufacturers.

From the basic DISC TYPE VALVE - crust breaking - to the sophisticated PISTON TYPE - full flow and self cleaning - for polymers or fluid transporting solids.

Metal sealed valves for high temperatures and pressures, or soft sealed for gas and liquid.

We offer a wide range of options up to every requirement: jacket to heat the fluid, flushing



connections to clean the body, bellows for absolute sealing, glass or PTFE coatings ... valves for full vacuum... or pressure over 420 bar, ... according to DIN, ANSI, UNI, JIS... class standards and in any requested material.

Actuators with accessories sets: limit switches, temperature sensors, solenoid valves, positioners...

All our valves are supplied in quality assurance with mechanical, chemical and final test certificate according to the requested class, or with non destructive examinations, helium leakage test...

For every request our technical department is at your disposal, suggesting and helping you to select the right valve for your plant.



The NICOLINI CLAUDIO Srl Company, established in 1947 by Comm.re Claudio Nicolini is located in Trezzano S/N, an industrial area close to Milan.

Today's plant spreads over an area of 7,000 m², 3,000 of which are covered.

Nicolini Company has always been manufacturing industrial valves for specific purposes: for Chemical, Pharmaceutical, Oil, Textile, Food processing, Nuclear industries, in Quality Guarantee.

In the field of Actuated Valves it has acquired such a know-how and production capacity that ranks it as one of the most qualified European industries.

OUR TOP PRODUCTS

- TANK BOTTOM AND SAMPLING VALVES
- HIGH PRESSURE VALVES
- Y-ANGLE-STRAIGHT GLOBE VALVES
- EXCESS FLOW VALVES
- CHANGE-OVER VALVES
- 4-WAY VALVES

- SPECIAL VALVES ON CUSTOMER SPECIFICATIONS AND.... OTHER VALVES IN:

STANDARDS: UNI-DIN-ANSI-JIS.... UP TO PN 420÷LBS 2500

MATERIALS: CARBON & STAINLESS STEEL, NICKEL ALLOYS, TITANIUM, BRONZE

ACTUATORS: MANUAL, PNEUMATIC, ELECTRICAL....

ACCESSORIES AND SPECIAL EXECUTION ON REQUEST.

Please do not hesitate to contact us

20090 Trezzano sul Naviglio (Milano) Italy - Via C. Treves, 68

Phone +39.02.48.400.722 - Fax +39.02.48.400.726

E-mail: info@nicolinivalves.it

NICOLINI CLAUDIO Srl